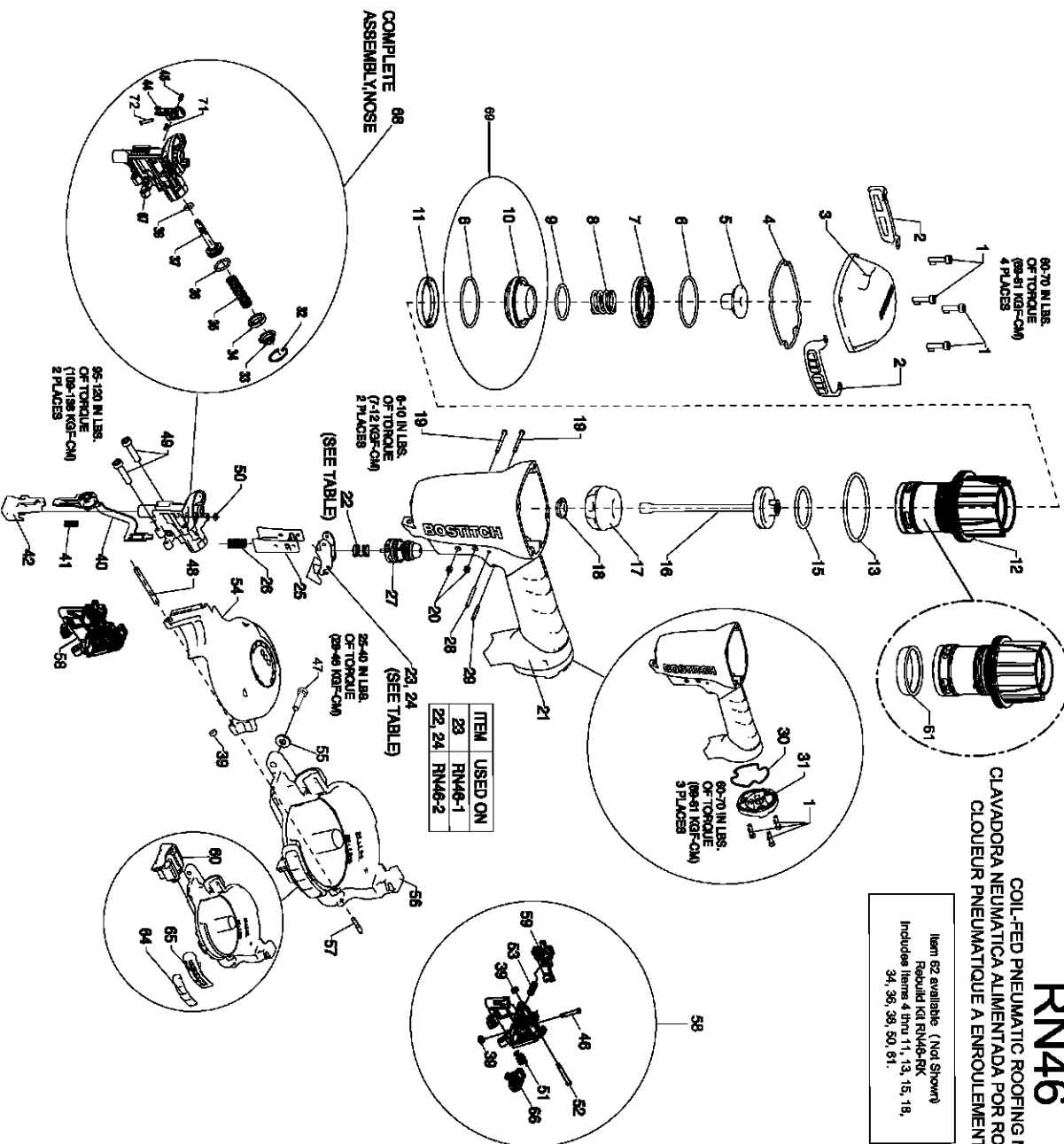


RN46

COIL-FED PNEUMATIC ROOFING NAILER
 CLAVADORA NEUMÁTICA ALIMENTADA POR ROLLO PARA TECHADO
 CLOUEUR PNEUMATIQUE A ENROULEMENT POUR TOITURE

Item 62 available (Not Shown)
 Requiere kit RND46K
 Incluye items 4 thru 11, 13, 15, 18,
 34, 36, 38, 50, 51.



Parts List for RN46-1 Type SN 17270000 and higher

Item Number	Part Number	Description	Qty Required
1	N494651	SOC HD CAP M5 X20	7
2	149845	ASSEMBLY-WEAR PLATE	2
3	149808	CAP-MACHINING	1
4	149832	SEAL-FRAME/CAP	1
5	149838	BUMPER-HEAD VALVE	1
6	149828	O-RING-1.925X.103 XN	2
7	149836	UPPER BODY-HEAD VALV	1
8	149806	SPRING-HEAD VALVE	1
9	149842	O-RING-1.299X.103 XN	1
10	149839	LOWER BODY-HEAD VALV	1
11	149840	SEAL-SLEEVE	1
12	9R217792	CYLINDER ASSEMBLY	1
13	850766	O-RING-2.609X.139	1
15	850607	O-RING	1
16	149826	ASSEMBLY-PISTON/DRIV	1
17	191777	BUMPER	1
18	149820	GUIDE-DRIVER	1
19	105811	SCREW-TRIGGER PIVOT	2
20	MHE3050-100	NUT-NYLON M3X.50	2
21	9R202298	FRAME ASSEM	1
22	100387	SPRING-COMPRESSION	1
23	107581	ASSEMBLY-C.T.TRIGGER	1
24	107582	ASSEMBLY-S.T.TRIGGER	1
25	107522	GUIDE-TRIP	1
26	149871	SPRING-CONTACT ARM	1
27	TVA6	KIT-TRIGGER VALVE	1
28	100298	PIN-SPIRAL M3X30	1

Parts List for RN46-1 Type SN 17270000 and higher

Item Number	Part Number	Description	Qty Required
29	MPP030020	PIN-SPIRAL M3X20MM	1
30	149816	SEAL-END CAP	1
31	149817	CAP-END	1
32	149854	RETAINING RING-INCH	1
33	149853	COLLAR-SPRING	1
34	149855	STOP-FEED PISTON	1
35	149887	SPRING-FEED PISTON	1
36	88998	O-RING	1
37	149852	FEED-PISTON	1
38	149883	O-RING-.299X.103 NBR	1
39	N12112	HINGE PIN RETAINER	3
40	149899	ASSEMBLY-TRIP	1
41	149874	SPRING-DEPTH ADJUST	1
42	149900	ASSEMBLY-CONTACT ARM	1
44	9R205576	FEED PAWL	1
45	149859	SPRING-FEED PAWL	1
46	149882	PIN-CHECK PAWL	1
47	MSC6100-25	SCREW-SHCS-M6X1.00X2	1
48	149905	PIN-DOOR/COVER	1
49	MSC6100-30	SCREW-SHCS-M6X1.00X3	2
50	149885	O-RING-.145X.070 CP	1
51	9R205484	LATCH SPRING	1
52	149886	PIN-DOOR LATCH	1
53	149898	SPRING-CHECK PAWL	1
54	149943	ASSEMBLY-COVER/CANIS	1
55	MPW6.2	WASHER.SPECIAL	1
56	149939	ASSEMBLY-CANISTER	1

Parts List for RN46-1 Type SN 17270000 and higher

Item Number	Part Number	Description	Qty Required
57	149907	PIN-COVER/CANISTER	1
58	160144	ASSEMBLY-DOOR	1
59	160142	PAWL-CHECK	1
60	149940	ASSEMBLY-SHINGLE GUI	1
61	149812	SEAL-CHECK	1
62	RN46-RK	REBUILD KIT-RN46	1
64	149866	WEAR PAD-CANISTER	1
65	161236	GUARD-CANISTER	2
66	149861	LATCH	1
67	MHE6100-100	NUT-ESN M6X1	1
68	9R217778	NOSE ASSEMBLY	1
69	9R195466	KIT-HEAD VALVE	1
71	MPG030010	PIN-ROLL-3MM X 10MM	1
72	9R210179	CHECK PAWL PIN	1