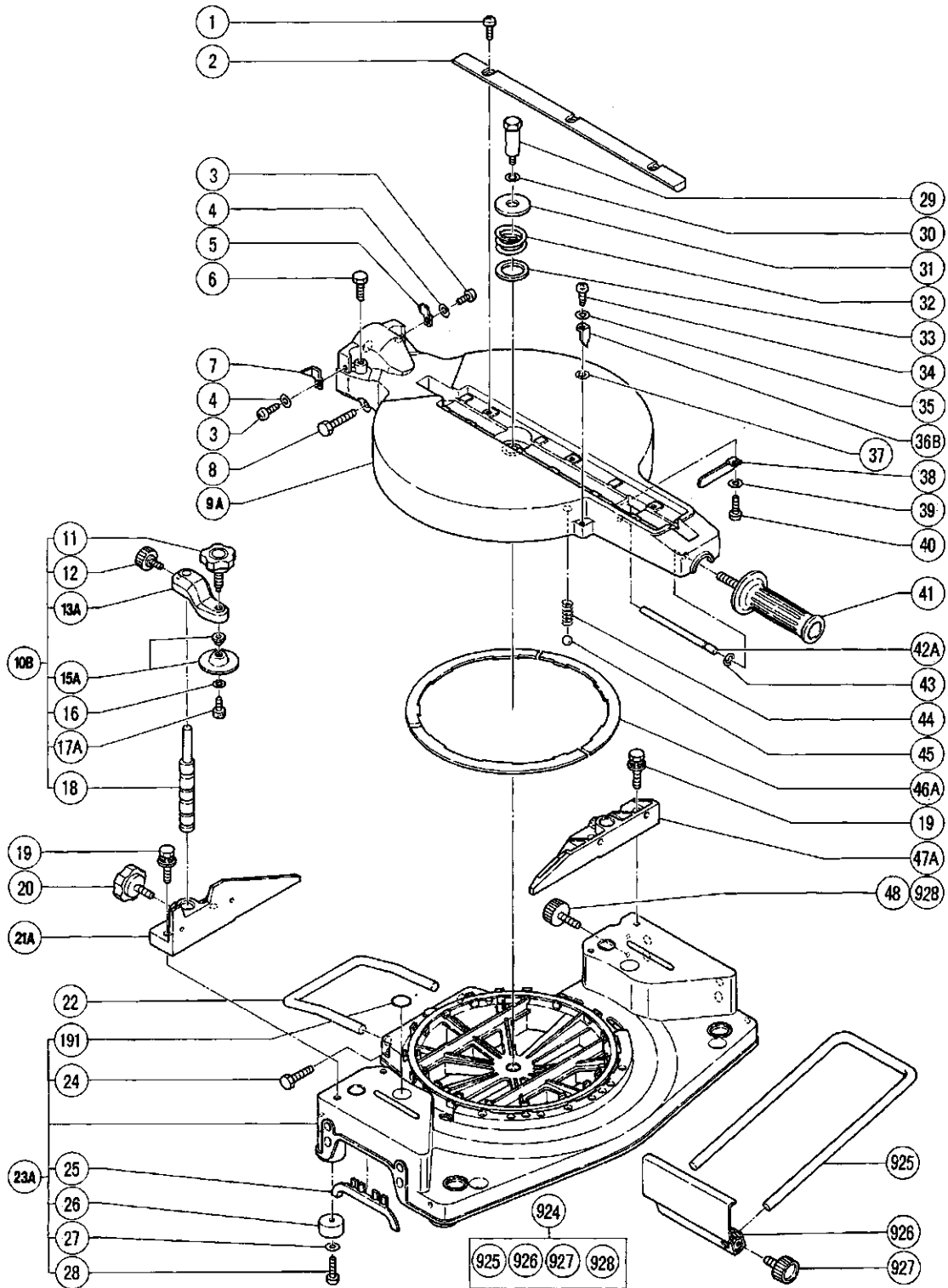


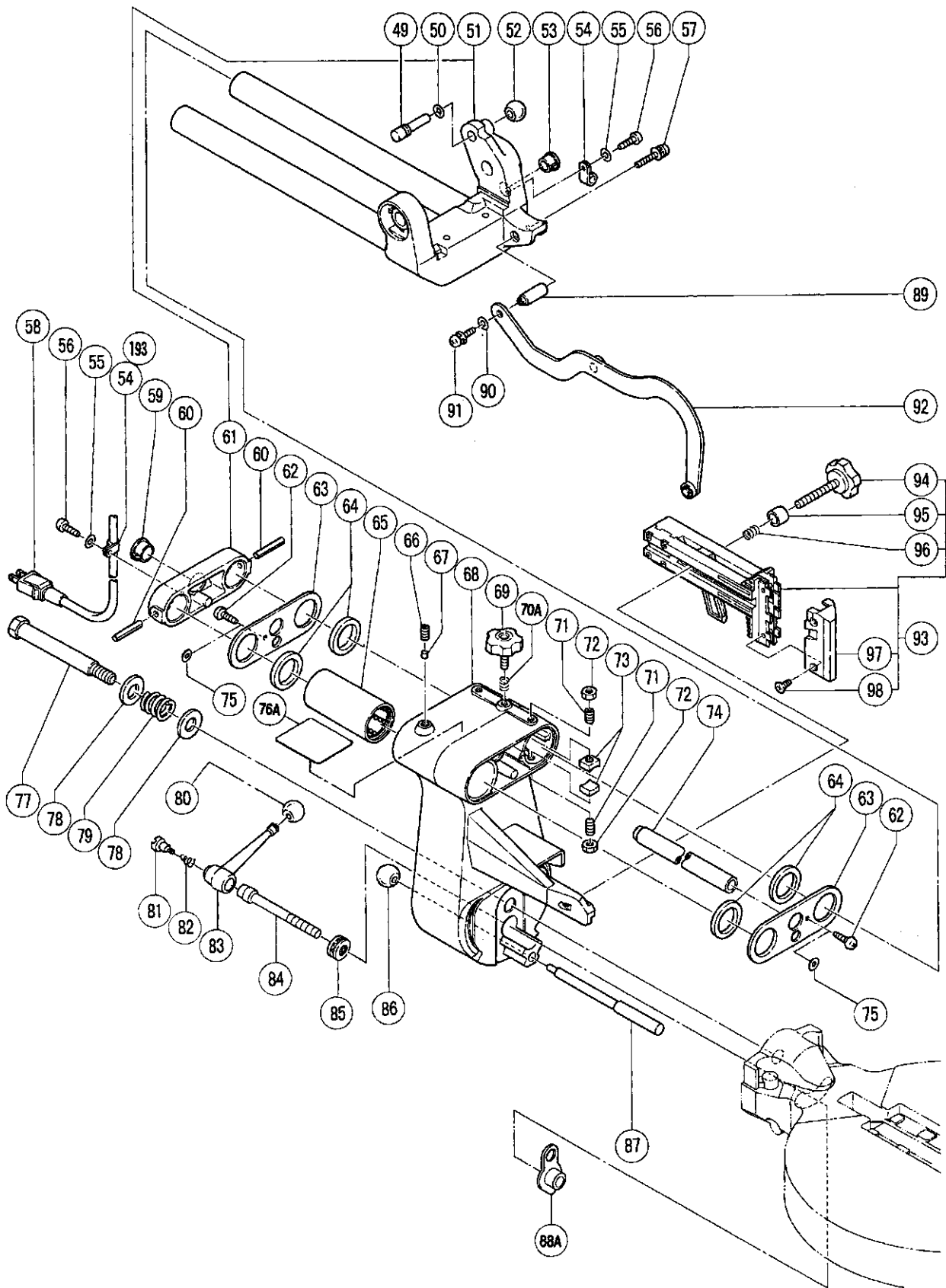
ELECTRIC TOOL PARTS LIST

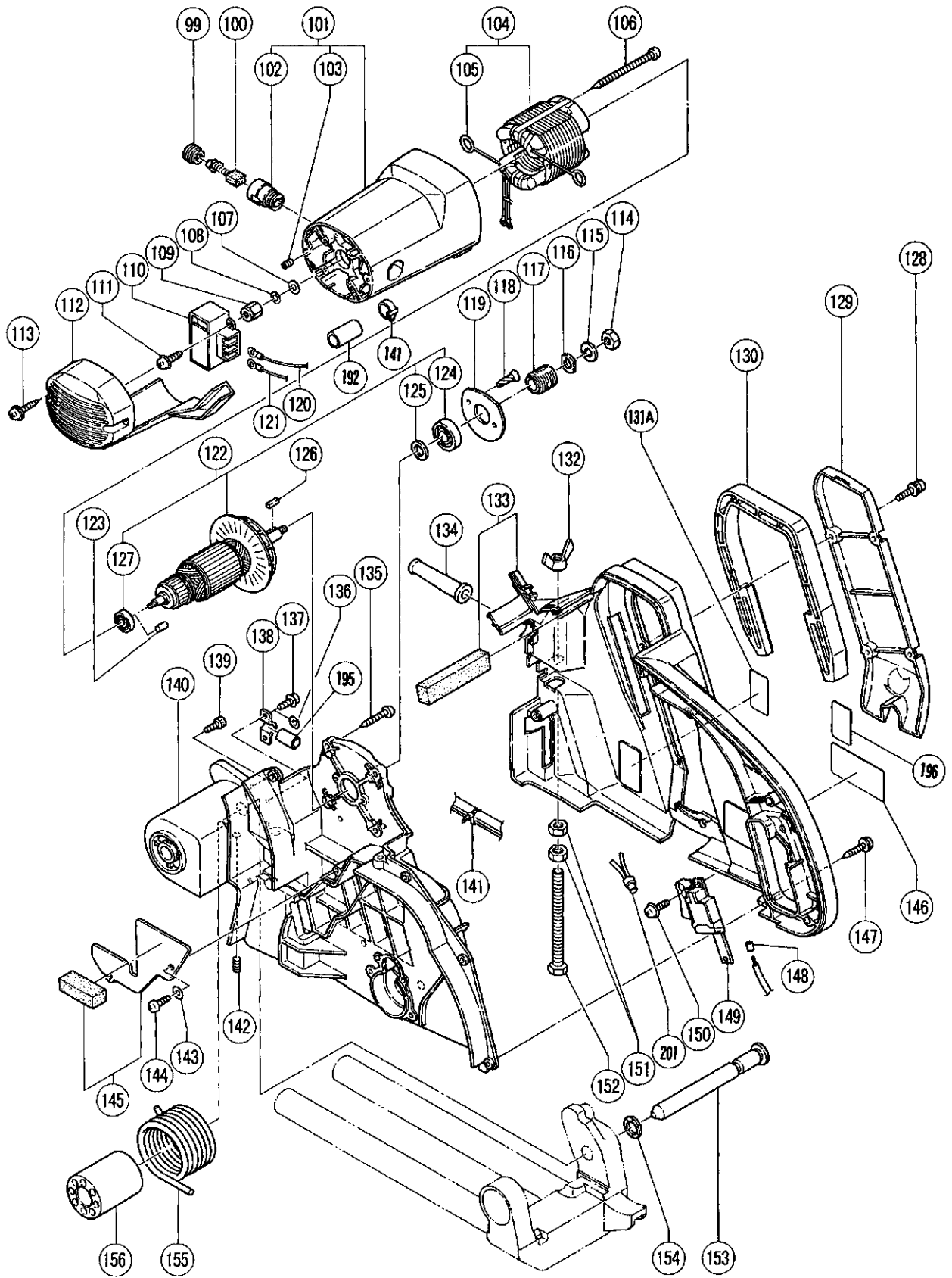
■ SLIDE COMPOUND SAW
Model C 12FSA

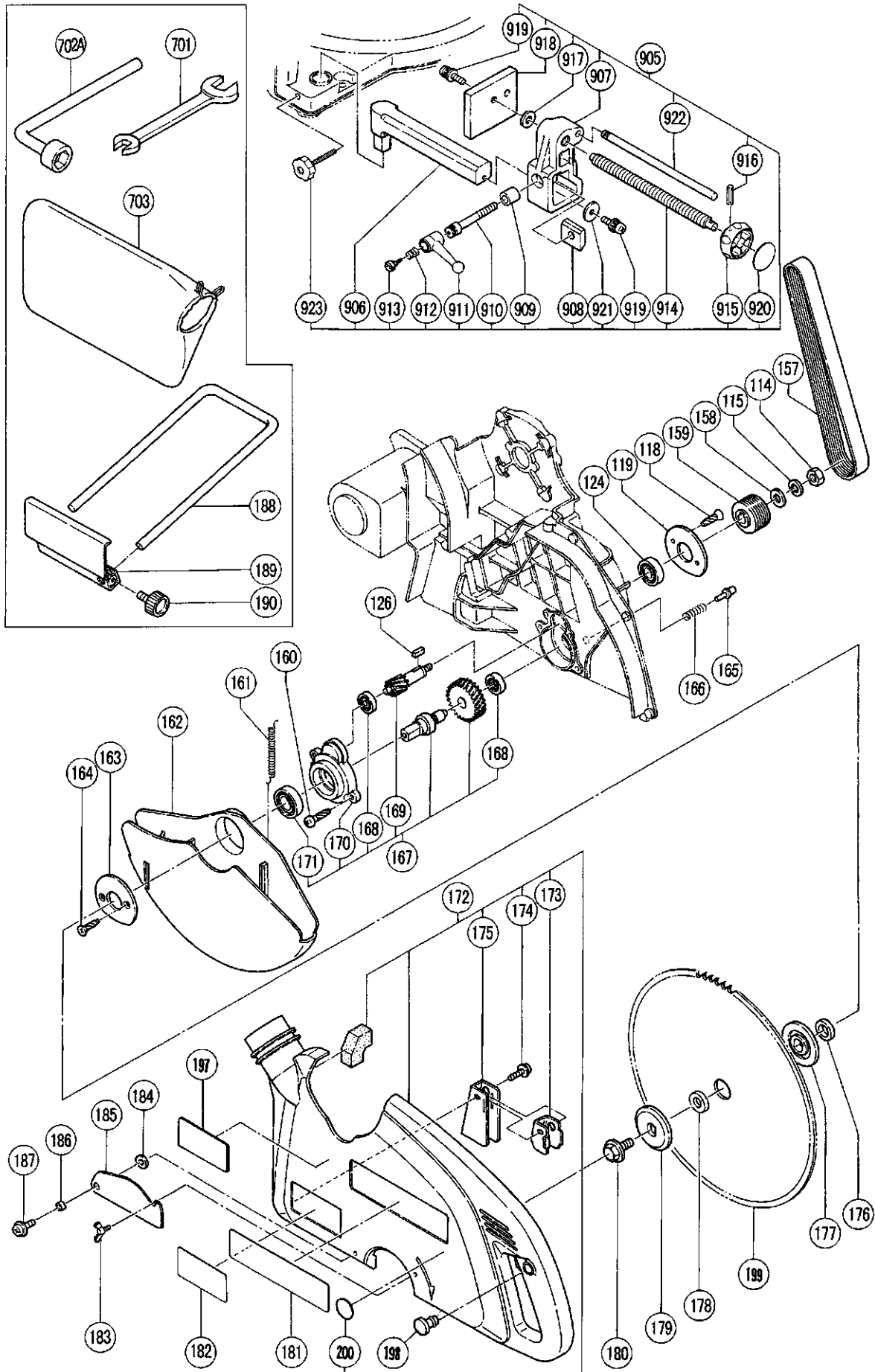
2001·9·14

(E2)









PARTS

C 12FSA

| ITEM NO. | CODE NO. | DESCRIPTION | NO. USED | REMARKS |
|----------|----------|---|----------|-----------------------------|
| 1 | 949-258 | MACHINE SCREW M6X20 (10 PCS.) | 6 | |
| 2 | 998-818 | TABLE INSERT | 2 | |
| 3 | 949-215 | MACHINE SCREW M4X8 (10 PCS.) | 2 | |
| 4 | 949-429 | BOLT WASHER M4 (10 PCS.) | 2 | |
| 5 | 310-718 | INDICATOR (B) | 1 | |
| 6 | 303-409 | NYLOCK BOLT M8X25 | 2 | |
| 7 | 310-719 | INDICATOR (C) | 1 | |
| 8 | 303-410 | NYLOCK BOLT M8X40 | 1 | |
| 9A | 310-733 | TURN TABLE | 1 | |
| 10B | 310-747 | WISE ASS'Y | 1 | INCLUD.11-13A,15A-18 |
| 11 | 308-396 | KNOB BOLT M10 | 1 | |
| 12 | 998-836 | KNOB BOLT M6X11 | 1 | |
| 13A | | SCREW HOLDER | 1 | |
| 15A | 319-974 | WISE PLATE SET | 1 | |
| 16 | 996-722 | WASHER | 1 | |
| 17A | 996-247 | MACHINE SCREW (W/WASHERS) M5X12 (BLACK) | 1 | |
| 18 | 310-748 | WISE SHAFT | 1 | |
| 19 | 307-221 | BOLT (W/WASHERS) M8X35 (BLACK) | 4 | |
| 20 | 303-450 | KNOB BOLT M8X20 | 1 | |
| 21A | 310-732 | FENCE (B) | 1 | |
| 22 | 310-886 | HOLDER (B) | 1 | |
| * 23A | 305-133 | BASE ASS'Y | 1 | INCLUD.24-28 |
| * 23A | 320-289 | BASE ASS'Y | 1 | INCLUD.24,26-28,191 FOR USA |
| 24 | 949-616 | BOLT M6X25 (10 PCS.) | 1 | |
| * 25 | 303-434 | BASE GRIP | 2 | EXCEPT FOR USA |
| 26 | 964-851 | BASE RUBBER | 5 | |
| 27 | 949-431 | BOLT WASHER M5 (10 PCS.) | 5 | |
| 28 | 949-241 | MACHINE SCREW M5X20 (10 PCS.) | 5 | |
| 29 | 303-736 | SHAFT (A) | 1 | |
| 30 | 949-457 | SPRING WASHER M8 (10 PCS.) | 1 | |
| 31 | 967-143 | WASHER (R) | 1 | |
| 32 | 306-086 | SPRING (E) | 1 | |
| 33 | 967-779 | WASHER (G) | 1 | |
| 34 | 949-215 | MACHINE SCREW M4X8 (10 PCS.) | 1 | |
| 35 | 949-429 | BOLT WASHER M4 (10 PCS.) | 1 | |
| 36B | 318-822 | INDICATOR | 1 | |
| 37 | 949-429 | BOLT WASHER M4 (10 PCS.) | 1 | |
| 38 | 998-814 | SPACER | 1 | |
| 39 | 949-429 | BOLT WASHER M4 (10 PCS.) | 1 | |
| 40 | 949-217 | MACHINE SCREW M4X12 (10 PCS.) | 1 | |
| 41 | 307-746 | SIDE HANDLE | 1 | |
| 42A | 998-815 | SHAFT | 1 | |
| 43 | 974-577 | RETAINING RING (E-TYPE) FOR D7 SHAFT | 1 | |
| 44 | 305-684 | SPRING (D) | 1 | |
| 45 | 959-153 | STEEL BALL D12.7 (10 PCS.) | 1 | |
| 46A | 303-399 | LINER | 3 | |
| 47A | 310-731 | FENCE (A) | 1 | |
| * 48 | 302-503 | KNOB BOLT M6X22 | 2 | EXCEPT FOR USA |
| 49 | 303-411 | SET PIN (A) | 1 | |
| 50 | 872-645 | O-RING (P-9) | 1 | |
| * 51 | 312-694 | HINGE ASS'Y | 1 | INCLUD.61 |

PARTS

C 12FSA

| ITEM NO. | CODE NO. | DESCRIPTION | NO. USED | REMARKS |
|----------|-------------|---------------------------------|----------|---------------------------|
| * 51 | 320-290 | HINGE ASS'Y | 1 | INCLUD.61 FOR USA |
| | 967-896 | GRIP | 1 | |
| * 53 | 305-152 | ONE-TOUCH BUSHING | 1 | EXCEPT FOR USA |
| * 54 | 948-193 | NYLON CLIP | 2 | EXCEPT FOR USA |
| * 55 | 949-429 | BOLT WASHER M4 (10 PCS.) | 2 | |
| * 55 | 949-429 | BOLT WASHER M4 (10 PCS.) | 1 | FOR USA |
| * 56 | 949-217 | MACHINE SCREW M4X12 (10 PCS.) | 2 | |
| * 56 | 949-217 | MACHINE SCREW M4X12 (10 PCS.) | 1 | FOR USA |
| | 986-274 | MACHINE SCREW (W/WASHERS) M5X25 | 1 | |
| * 58 | 500-439Z | CORD | 1 | (CORD ARMOR D10.1) |
| * 58 | 500-407Z | CORD | 1 | (CORD ARMOR D8.8) FOR USA |
| * 59 | 975-012 | ONE-TOUCH BUSHING | 1 | EXCEPT FOR USA |
| | 949-686 | ROLL PIN D6X40 (10 PCS.) | 2 | |
| * 61 | 305-170 | SUPPORT | 1 | |
| * 61 | 307-222 | SUPPORT | 1 | FOR USA |
| | 949-217 | MACHINE SCREW M4X12 (10 PCS.) | 2 | |
| * 63 | 305-140 | PACKING COVER | 2 | |
| * 63 | 310-863 | PACKING COVER (C) | 2 | FOR USA |
| | 996-226 | FELT | 4 | |
| | 998-825 | BALL BUSHING | 1 | |
| | 966-458 | HEX. SOCKET SET SCREW M8X8 | 1 | |
| | 976-301 | BEARING LOCK | 1 | |
| | 310-734 | HOLDER (A) | 1 | |
| | 996-225 | KNOB BOLT M8X20 | 1 | |
| | 70A 947-859 | LOCK SPRING | 1 | |
| | 974-500 | HEX. SOCKET SET SCREW M8X16 | 4 | |
| | 949-568 | LOCK NUT M8 (10 PCS.) | 4 | |
| | 996-223 | BUSHING | 4 | |
| * 74 | 310-737 | PIPE | 1 | EXCEPT FOR USA |
| | 949-429 | BOLT WASHER M4 (10 PCS.) | 2 | |
| | | CAUTION LABEL (A) | 1 | |
| | 310-712 | HINGE SHAFT | 1 | |
| | 949-438 | BOLT WASHER M16 (10 PCS.) | 2 | |
| | 310-887 | SPRING (B) | 1 | |
| | 968-636 | GRIP (B) | 1 | |
| | 305-180 | CLUTCH SCREW | 1 | |
| | 305-179 | CLUTCH SPRING | 1 | |
| | 310-890 | CLAMP LEVER | 1 | |
| | 310-888 | BOLT (LEFT HAND) M12X165 | 1 | |
| | 939-381 | THRUST BEARING (51101) | 1 | |
| | 967-896 | GRIP | 1 | |
| | 310-711 | SET PIN | 1 | |
| | 310-889 | SCREW HOLDER | 1 | |
| | 309-990 | SHAFT (B) | 1 | |
| | 998-987 | WASHER | 1 | |
| | 990-541 | MACHINE SCREW (W/WASHERS) M5X16 | 1 | |
| | 310-723 | LINK | 1 | |
| | 315-277 | GUARD ASS'Y (A) | 1 | INCLUD.94-98 |
| | 303-408 | KNOB BOLT M8X60 | 1 | |
| | 303-404 | SLEEVE | 1 | |
| | 873-923 | GOVERNOR SPRING | 1 | |

PARTS

C 12FSA

| ITEM NO. | CODE NO. | DESCRIPTION | NO. USED | REMARKS |
|----------|----------|---|----------|--------------------|
| 97 | 303-403 | GUARD (C) | 1 | |
| 98 | 998-850 | FLAT HD. SCREW (BRASS) M4X6 | 4 | |
| 99 | 996-259 | BRUSH CAP | 2 | |
| 100 | 999-038 | CARBON BRUSH (1 PAIR) | 2 | |
| 101 | 315-547 | HOUSING ASS'Y | 1 | INCLUD.102,103 |
| 102 | 976-807 | BRUSH HOLDER | 2 | |
| 103 | 966-426 | HEX. SOCKET SET SCREW M5X6 | 2 | |
| * 104 | 340-336 | STATOR ASS'Y 100V-120V | 1 | INCLUD.105 |
| * 104 | 340-410E | STATOR ASS'Y 230V | 1 | INCLUD.105 |
| * 104 | 340-410F | STATOR ASS'Y 240V | 1 | INCLUD.105 |
| 105 | 976-831 | BRUSH TERMINAL | 2 | |
| 106 | 958-422 | TAPPING SCREW D5X65 | 2 | |
| 107 | 949-432 | BOLT WASHER M6 (10 PCS.) | 1 | |
| 108 | 307-735 | SUPER LOCK WASHER | 1 | |
| 109 | 307-743 | MAGNET | 1 | |
| * 110 | 315-550 | CONTROLLER | 1 | |
| * 110 | 315-709 | CONTROLLER | 1 | FOR USA |
| 111 | 305-812 | TAPPING SCREW (W/FLANGE) D4X16 (BLACK) | 2 | |
| 112 | 310-726 | TAIL COVER | 1 | |
| 113 | 304-035 | TAPPING SCREW (W/FLANGE) D4X25 (BLACK) | 2 | |
| 114 | 949-558 | NUT M8 (10 PCS.) | 2 | |
| 115 | 978-559 | SUPER LOCK WASHER | 2 | |
| 116 | 307-744 | SPECIAL WASHER | 1 | |
| 117 | 310-728 | PULLEY (A) | 1 | |
| 118 | 949-322 | FLAT HD. SCREW M4X10 (10 PCS.) | 4 | |
| 119 | 307-731 | COVER | 2 | |
| 120 | 310-743 | INTERNAL WIRE (BLUE) | 1 | |
| * 121 | 315-551 | INTERNAL WIRE (WHITE) | 1 | |
| * 121 | 310-744 | INTERNAL WIRE (WHITE) | 1 | FOR USA |
| * 122 | 360-386 | ARMATURE ASS'Y 100V-120V | 1 | INCLUD.124,125,127 |
| * 122 | 360-462E | ARMATURE ASS'Y 230V-240V | 1 | INCLUD.124,125,127 |
| 123 | 976-441 | BEARING LOCK | 1 | |
| 124 | 620-1VV | BALL BEARING 6201VVCMP2L | 2 | |
| 125 | 976-244 | WASHER M12 | 1 | |
| 126 | 948-919 | FEATHER KEY 4X4X15 | 2 | |
| 127 | 608-DDM | BALL BEARING 608DDC2PS2L | 1 | |
| 128 | 995-096 | MACHINE SCREW (W/WASHERS) M5X20 (BLACK) | 4 | |
| 129 | 315-552 | PULLEY COVER | 1 | |
| 130 | 307-740 | HANDLE | 1 | |
| 131A | 310-866 | CAUTION LABEL (F) | 1 | |
| 132 | 949-312 | WING NUT M8 (10 PCS.) | 1 | |
| 133 | 315-548 | SIDE COVER (R) | 1 | |
| * 134 | 988-855 | CORD ARMOR D8.8 | 1 | |
| * 134 | 994-565 | CORD ARMOR D10.1 | 1 | |
| 135 | 305-558 | TAPPING SCREW (W/FLANGE) D5X25 (BLACK) | 4 | |
| 136 | 949-429 | BOLT WASHER M4 (10 PCS.) | 2 | |
| * 137 | 949-215 | MACHINE SCREW M4X8 (10 PCS.) | 2 | |
| * 137 | 949-217 | MACHINE SCREW M4X12 (10 PCS.) | 2 | FOR USA |
| 138 | 934-028 | CORD CLIP | 1 | |
| 139 | 949-819 | HEX. SOCKET HD. BOLT M5X10 (10 PCS.) | 1 | |
| 140 | 310-720 | GEAR CASE | 1 | |

PARTS

C 12FSA

| ITEM NO. | CODE NO. | DESCRIPTION | NO. USED | REMARKS |
|----------|----------|--|----------|----------------------------|
| 141 | 975-144 | CABLE TIE | 3 | |
| 142 | 996-281 | HEX. SOCKET SET SCREW M8X16 | 1 | |
| 143 | 949-429 | BOLT WASHER M4 (10 PCS.) | 2 | |
| 144 | 949-217 | MACHINE SCREW M4X12 (10 PCS.) | 2 | |
| 145 | 310-725 | COVER (A) | 1 | |
| 146 | | NAME PLATE | 1 | |
| 147 | 304-035 | TAPPING SCREW (W/FLANGE) D4X25 (BLACK) | 7 | |
| * 148 | 988-894 | TUBE (D) | 2 | |
| * 148 | 988-894 | TUBE (D) | 1 | FOR USA |
| * 149 | 976-450 | SWITCH (A) (2P PILLAR TYPE) W/O LOCK | 1 | |
| * 149 | 988-925 | SWITCH (B) (1P PILLAR TYPE) W/LOCK | 1 | FOR USA |
| 150 | 301-771 | TAPPING SCREW (W/WASHERS) D4X12 | 1 | |
| 151 | 949-558 | NUT M8 (10 PCS.) | 2 | |
| 152 | 952-013 | BOLT M8X100 | 1 | |
| 153 | 305-130 | HINGE SHAFT | 1 | |
| 154 | 301-760 | WAVE WASHER | 1 | |
| 155 | 310-898 | SPRING | 1 | |
| 156 | 305-128 | SLEEVE | 1 | |
| 157 | 310-727 | BELT (200H13) | 1 | |
| 158 | 949-433 | BOLT WASHER M8 (10 PCS.) | 1 | |
| 159 | 310-729 | PULLEY (B) | 1 | |
| 160 | 949-239 | MACHINE SCREW M5X16 (10 PCS.) | 2 | |
| 161 | 307-739 | RETURN SPRING | 1 | |
| 162 | 310-724 | SAFETY COVER | 1 | |
| 163 | 307-731 | COVER | 1 | |
| 164 | 949-322 | FLAT HD. SCREW M4X10 (10 PCS.) | 2 | |
| 165 | 307-732 | STOPPER PIN | 1 | |
| 166 | 988-821 | LOCK SPRING | 1 | |
| 167 | 310-721 | SPINDLE ASS'Y | 1 | INCLUD.168-171 |
| 168 | 608-VVM | BALL BEARING 608VVC2PS2L | 2 | |
| 169 | | PINION | 1 | |
| 170 | 310-722 | BEARING HOLDER | 1 | |
| 171 | 600-3DD | BALL BEARING 6003DDCMPS2S | 1 | |
| * 172 | 315-549 | SIDE COVER (L) ASS'Y | 1 | INCLUD.173-175 |
| * 172 | 320-291 | SIDE COVER (L) ASS'Y | 1 | INCLUD.173-175,200 FOR USA |
| 173 | 310-184 | GUIDE HOLDER | 1 | |
| 174 | 305-812 | TAPPING SCREW (W/FLANGE) D4X16 (BLACK) | 1 | |
| 175 | 310-741 | DUST GUIDE | 1 | |
| 176 | 310-745 | SPACER | 1 | |
| * 177 | 301-777 | WASHER (A) | 1 | FOR NZL |
| * 177 | 301-778 | WASHER (B) | 1 | FOR AUS,USA |
| * 178 | 976-819 | COLLAR (B) FOR D25.4 HOLE | 1 | FOR AUS,USA |
| * 178 | 974-663Z | COLLAR (A) FOR D30 HOLE | 1 | FOR AUS |
| 179 | 301-778 | WASHER (B) | 1 | |
| 180 | 976-811 | BOLT (LEFT HAND) M8 | 1 | |
| 181 | | HITACHI LABEL | 1 | |
| 182 | | CAUTION LABEL (G) | 1 | |
| * 183 | 949-397 | WING BOLT M5X10 (10 PCS.) | 1 | FOR AUS,USA |
| * 184 | 949-429 | BOLT WASHER M4 (10 PCS.) | 1 | FOR AUS,USA |
| * 185 | 310-148 | SPINDLE COVER | 1 | FOR AUS,USA |
| * 186 | 998-980 | SPACER | 1 | FOR AUS,USA |

STANDARD ACCESSORIES

C 12FSA

| ITEM NO. | CODE NO. | DESCRIPTION | NO. USED | REMARKS | |
|----------|----------|-----------------|----------|---------|--|
| 701 | 972-043 | WRENCH 10/13MM | 1 | | |
| 702A | 985-051 | BOX WRENCH 17MM | 1 | | |
| 703 | 998-845 | DUST BAG | 1 | | |
| | | | | | |
| | | | | | |
| | | | | | |
| | | | | | |
| | | | | | |
| | | | | | |
| | | | | | |
| | | | | | |
| | | | | | |
| | | | | | |
| | | | | | |
| | | | | | |
| | | | | | |
| | | | | | |

OPTIONAL ACCESSORIES

| ITEM NO. | CODE NO. | DESCRIPTION | NO. USED | REMARKS | |
|----------|----------|-------------------------------------|----------|------------------------|--|
| 901 | 305-546 | TCT SAW BLADE 305MM-D25.4 HOLE-NT60 | 1 | | |
| 902 | 309-418 | TCT SAW BLADE 305MM-D25.4 HOLE-NT80 | 1 | | |
| 903A | 301-721 | TCT SAW BLADE 305MM-D25.4 HOLE-NT90 | 1 | | |
| 904A | 310-875 | TCT SAW BLADE 305MM-D25.4 HOLE-NT96 | 1 | | |
| 905 | 305-174 | WISE (A) ASS'Y | 1 | INCLUD.905-923 | |
| 906 | 305-175 | WISE HOLDER | 1 | | |
| 907 | 305-184 | SCREW HOLDER | 1 | | |
| 908 | 305-176 | HOLDER PLATE | 1 | | |
| 909 | 305-177 | SLEEVE (A) | 1 | | |
| 910 | 305-178 | CLAMP BOLT M10 | 1 | | |
| 911 | 996-219 | CLAMP LEVER | 1 | | |
| 912 | 305-179 | CLUTCH SPRING | 1 | | |
| 913 | 305-180 | CLUTCH SCREW | 1 | | |
| 914 | 305-181 | SCREW | 1 | | |
| 915 | 996-263 | KNOB | 1 | | |
| 916 | 949-548 | ROLL PIN D4X25 (10 PCS.) | 1 | | |
| 917 | 949-434 | BOLT WASHER M10 (10 PCS.) | 1 | | |
| 918 | 305-182 | WISE (A) | 1 | | |
| 919 | 997-314 | MACHINE SCREW (W/WASHERS) M6X10 | 2 | | |
| 920 | 998-832 | LABEL (A) | 1 | | |
| 921 | 996-246 | WASHER (C) | 1 | | |
| 922 | 305-183 | SHAFT (B) | 1 | | |
| 923 | 305-419 | KNOB BOLT M6X51 | 1 | | |
| * 924 | 320-277 | GUIDE ASS'Y | 1 | INCLUD.925-928 FOR USA | |
| * 925 | 303-397 | HOLDER | 2 | FOR USA | |
| * 926 | 303-757 | STOPPER | 1 | FOR USA | |
| * 927 | 998-836 | KNOB BOLT M6X11 | 1 | FOR USA | |
| * 928 | 302-503 | KNOB BOLT M6X22 | 2 | FOR USA | |
| | | | | | |
| | | | | | |
| | | | | | |
| | | | | | |
| | | | | | |