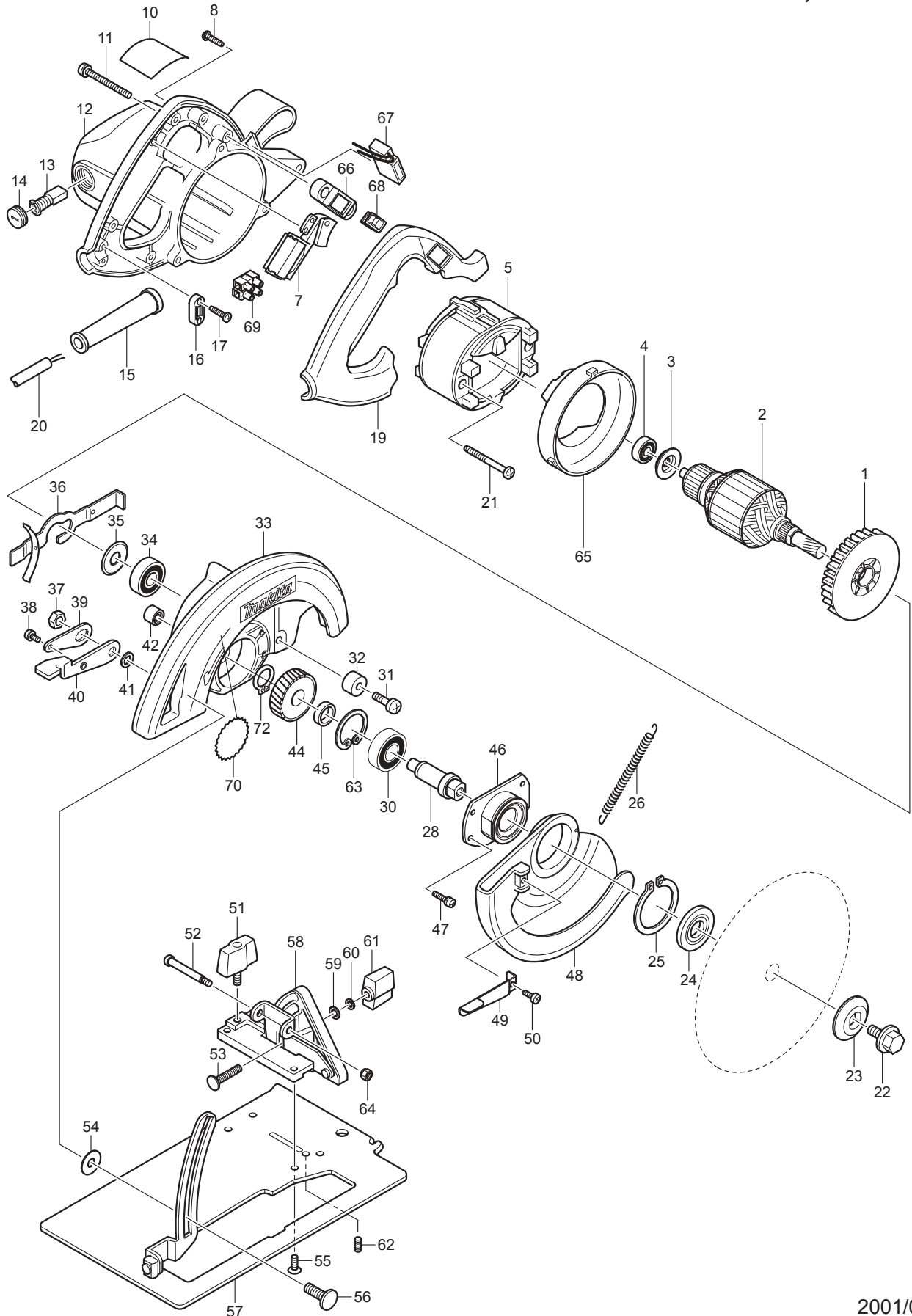




06 - 2011
5007FA / 5007FAK (MKC)
(Made in China)
7-1/4" CRCLR SAW W/LIGHT, BRAKE



Item No	Type	Ref	Part No	Description	Qty	Unit
001			240003-4	FAN 80	1	PC.
002			510057-8	ARMATURE ASS'Y 115V	1	PC.
		INC.		Item No. 1,3,4,34,35		
003			681625-5	INSULATION WASHER	1	PC.
004	2		210005-4	BALL BEARING 608LB	1	PC.
005	2		596366-9	* FIELD ASS'Y 115V	1	PC.
		INC.	654020-2	* RING TERMINAL	1	PC.
		INC.	654502-4	* CONNECTOR P-2	1	PC.
	3		596401-3	* FIELD ASS'Y 115V	1	PC.
		INC.	654020-2	* RING TERMINAL	1	PC.
		INC.	654502-4	* CONNECTOR P-2	1	PC.
007	2		651061-9	* SWITCH TG933TNB-3	1	PC.
008			265995-6	TAPPING SCREW 4X18	4	PC.
010			853565-9	NAME PLATE 5007FA	1	PC.
011			911273-9	PAN HEAD SCREW M5X50	3	PC.
012	2		142466-9	* MOTOR HOUSING COMPLETE	1	PC.
		INC.	643653-8	* BRUSH HOLDER 6.5-13.5	2	PC.
013			194986-9	CARBON BRUSH CB-154 2PC/SET W/ ORIGIN	1	SET
014			643650-4	BRUSH HOLDER CAP 6.5-13.5	2	PC.
015	2		682574-9	CORD GUARD 10-90	1	PC.
016	2		687124-5	STRAIN RELIEF	1	PC.
017			265995-6	TAPPING SCREW 4X18	2	PC.
019	2		454973-3	* HANDLE COVER	1	PC.
020			664463-0	CORD W/PLUG 2P-14-2.5M, SJ	1	PC.
021			266046-8	TAPPING SCREW 5X50	2	PC.
022			251644-1	HEX. FLANGE HEAD BOLT M8X20	1	PC.
023			224275-9	OUTER FLANGE 40	1	PC.
024			224151-7	INNER FLANGE 40	1	PC.
025			961201-4	RETAINING RING S-42	1	PC.
026	2		231888-9	* TENSION SPRING 4	1	PC.
028			324256-4	SPINDLE	1	PC.
030			211206-7	BALL BEARING 6202LLB	1	PC.
031			251247-1	+ PAN HEAD SCREW M6X20	1	PC.
032			262502-6	RUBBER SLEEVE 6	1	PC.
033	3		140H40-5	BLADE CASE COMPLETE	1	PC.
		INC.	213459-4	O RING 32	1	PC.
		INC.		Item No. 42		
034			211106-1	BALL BEARING 6201LLB	1	PC.
035			213102-5	DUST SEAL 12	1	PC.
036			163113-9	SPINDLE LOCK	1	PC.
037			931402-8	HEX. NUT M8	1	PC.
038			911106-8	PAN HEAD SCREW M4X8	1	PC.
039			341415-5	LOCK PLATE	1	PC.
040			341416-3	LEVER PLATE	1	PC.
041			941201-0	FLAT WASHER 8	1	PC.
042			212052-1	NEEDLE BEARING 1010	1	PC.
044			226532-1	HELICAL GEAR 39	1	PC.
045			257064-7	RING 15	1	PC.
046			316700-5	BEARING BOX	1	PC.
047			911126-2	PAN HEAD SCREW M4X16	4	PC.
048			317436-9	SAFETY COVER	1	PC.
049			341417-1	LEVER	1	PC.
050			266026-4	TAPPING SCREW BIND CT 4X12	1	PC.
051			251858-2	SCREW M6X15	1	PC.

Item No	Type	Ref	Part No	Description	Qty	Unit
052			265075-8	+ PAN HEAD SCREW M5	1	PC.
053			251920-3	CAP SQUARE NECK BOLT M6X30	1	PC.
054	2		267238-2	FLAT WASHER 12	1	PC.
055			912212-2	COUNTERSUNK HEAD SCREW M5X12	4	PC.
056			266249-4	CAP SQUARE NECK BOLT M8X24	1	PC.
057			163378-3	BASE	1	PC.
058			163248-6	ANGULAR PLATE	1	PC.
059			941151-9	FLAT WASHER 6	1	PC.
060	4		253428-3	SPRING WASHER 6	1	PC.
061			252624-0	WING NUT M6	1	PC.
062			266213-5	H.S.SET SCREW(FLAT POINT)M5X12	1	PC.
063			962153-2	RETAINING RING R-35	1	PC.
064			252103-8	HEX. LOCK NUT M5-8	1	PC.
065			417711-4	BUFFLE PLATE	1	PC.
067	2		631709-9	* LIGHT CIRCUIT	1	PC.
069			654531-7	TERMINAL BLOCK 2P	1	PC.
070	2		804774-3	BRAKE INDICATION LABEL	1	PC.
072			961055-9	RETAINING RING S-15	1	PC.
101	2		654302-2	* RECEPTACLE	3	PC.
C01	2		876431-3	CARTON F/5007FA	1	PC.
C01A			872355-1	CARTON F/5007FAK	1	PC.
E01			810133-1	CAUTION LABEL	1	PC.

ACCESSORIES

- See catalogue or visit www.makita.ca for more optional accessories -

A01			164095-8	GUIDE RULE	1	PC.
A02			D-35352-10	7-1/4" C.T. SAW BLADE 24T 10/PK	1	PC.
			A-94530-10	7-1/4" FRAMING BLADE, 24T 5/8" 10PC/PK	1	PC.
A03			782016-4	OFFSET WRENCH 13	1	PC.
A04			824473-1	PLASTIC CARRYING CASE	1	PC.
		INC.	417059-4	LATCH	2	PC.
		INC.	418889-6	HANDLE	1	PC.
A05			199711-3	DUST NOZZLE SET	1	PC.
		INC.	272243-5	LEVER 36	1	PC.
		INC.	911223-4	PH SCREW M5X16 W/WR	1	PC.

SERVICE CHANGES

Wiring Diagram Changes: See TI# Y05803 and TI# A2015

1. Changes on Switch and Field

(T/I# Y05803)

(T/I# A2015)

Item No.	Description	Type 1	Type 2	Type 3
005	Field Assy	596231-2	596366-9	596401-3
007	Switch	651042-3		651061-9
101	Connector / Receptacle	654001-6		654302-2
102	Bind Screw	652021-4		-----

Above parts are completely interchangeable as a set.

To keep interchangeability, the length of Field lead wire (yellow) has been changed from 300mm to 380mm.

The wiring way has also been changed as drawn below.

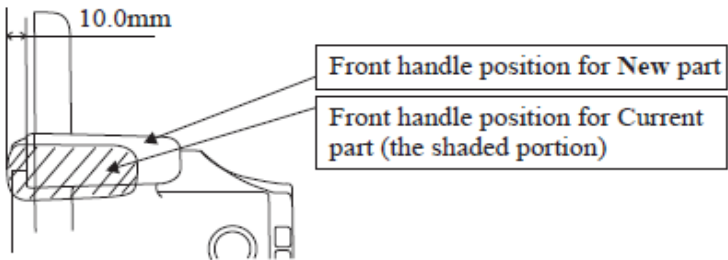
Note: The new Field ass'y (596366-9) is substituted for the current Field ass'y (596231-2) if the excess length 80mm of Field lead wire (yellow) is cut out.

2. Changes on Motor Housing etc.

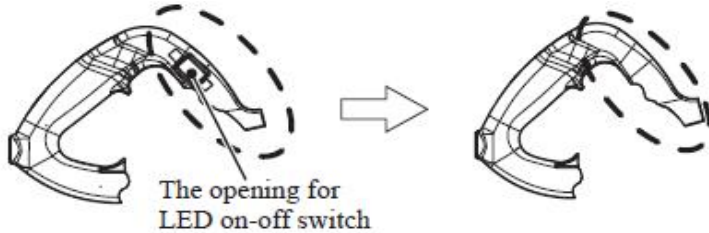
(TI#A2015)

Item No.	Description	Type 1	Type2
012	MOTOR HOUSING COMPLETE	152989-9	142466-9
019	HANDLE COVER	417712-2	454973-3
066	FRAME	417468-7	-----
067	LIGHT CIRCUIT	631453-8	631709-9
068	SWITCH SLE6A	651514-8	-----
100	RECEPTACLE	654069-2	-----

Above parts are completely interchangeable as a set.



Front handle of Motor housing complete has been repositioned 10.0mm apart from the blade.



The opening for LED on-off switch on Handle cover has been eliminated.
The shape of Handle cover has been also changed due to the change of Motor housing complete.

3. Changes on Tension Spring 4

(TI#A3885)

Item No.	Description	Type 1	Type2
26	Tension spring 4	231828-7	231888-9

Type 1



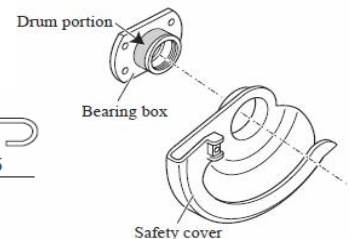
Spring pulling force: 4.0N



Type 2



Spring pulling force: 4.9N



Note: When replacing Tension spring 4, apply 0.05ml of Lubricant VG46 on Drum portion of Bearing box where Safety cover pivots as illustrated below.