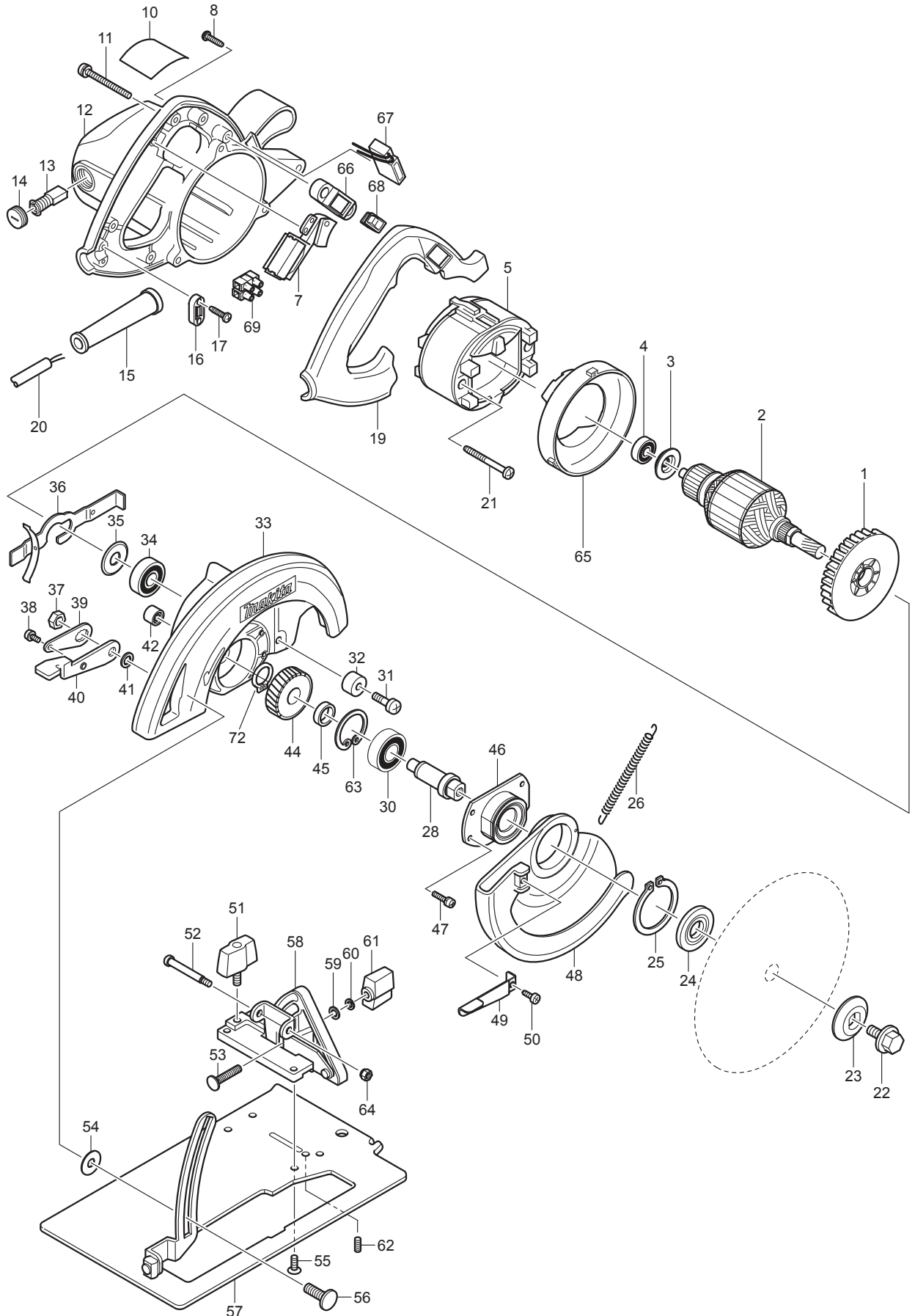




06 - 2011
5007F / 5007FK (MKC)
(Made in China)

7-1/4" CRCLR SAW W/LIGHT AC/DC



| Item No | Type | Ref | Part No | Description | Qty | Unit |
|---------|------|------|----------|---------------------------------------|-----|------|
| 001 | | | 240003-4 | FAN 80 | 1 | PC. |
| 002 | | | 510057-8 | ARMATURE ASS'Y 115V | 1 | PC. |
| | | INC. | | INC. 1,3,4,34,35 | | |
| 003 | | | 681625-5 | INSULATION WASHER | 1 | PC. |
| 004 | 2 | | 210005-4 | BALL BEARING 608DDW | 1 | PC. |
| 005 | 2 | | 596396-0 | * FIELD ASS'Y 115V | 1 | PC. |
| | | INC. | 654020-2 | * RING TERMINAL | 2 | PC. |
| | | INC. | 654502-4 | * CONNECTOR P-2 | 2 | PC. |
| 007 | | | 651172-0 | SWITCH TG933TN-1 | 1 | PC. |
| 008 | | | 265995-6 | TAPPING SCREW 4X18 | 4 | PC. |
| 010 | | | 853564-1 | NAME PLATE 5007F | 1 | PC. |
| 011 | | | 911273-9 | PAN HEAD SCREW M5X50 | 3 | PC. |
| 012 | 1 | | 152989-9 | * MOTOR HOUSING COMPLETE | 1 | PC. |
| | | INC. | 643653-8 | * BRUSH HOLDER 6.5-13.5 | 2 | PC. |
| | 2 | | 142466-9 | * MOTOR HOUSING COMPLETE | 1 | PC. |
| | | INC. | 643653-8 | * BRUSH HOLDER 6.5-13.5 | 2 | PC. |
| 013 | | | 194986-9 | CARBON BRUSH CB-154 2PC/SET W/ ORIGIN | 1 | SET |
| 014 | | | 643650-4 | BRUSH HOLDER CAP 6.5-13.5 | 2 | PC. |
| 015 | 2 | | 682574-9 | * CORD GUARD 10-90 | 1 | PC. |
| 016 | 2 | | 687124-5 | STRAIN RELIEF | 1 | PC. |
| 017 | | | 265995-6 | TAPPING SCREW 4X18 | 2 | PC. |
| 019 | 2 | | 454973-3 | * HANDLE COVER | 1 | PC. |
| 020 | | | 664463-0 | CORD W/PLUG 2P-14-2.5M, SJ | 1 | PC. |
| 021 | | | 266046-8 | TAPPING SCREW 5X50 | 2 | PC. |
| 022 | | | 251644-1 | HEX. FLANGE HEAD BOLT M8X20 | 1 | PC. |
| 023 | | | 224275-9 | OUTER FLANGE 40 | 1 | PC. |
| 024 | | | 224151-7 | INNER FLANGE 40 | 1 | PC. |
| 025 | | | 961201-4 | RETAINING RING S-42 | 1 | PC. |
| 026 | 2 | | 231888-9 | * TENSION SPRING 4 | 1 | PC. |
| 028 | | | 324256-4 | SPINDLE | 1 | PC. |
| 030 | | | 211206-7 | BALL BEARING 6202LLB | 1 | PC. |
| 031 | | | 251247-1 | + PAN HEAD SCREW M6X20 | 1 | PC. |
| 032 | | | 262502-6 | RUBBER SLEEVE 6 | 1 | PC. |
| 033 | 3 | | 140H40-5 | * BLADE CASE COMPLETE | 1 | PC. |
| | | INC. | 213459-4 | * O RING 32 | 1 | PC. |
| | | INC. | | * Item No. 42 | | |
| 034 | | | 211106-1 | BALL BEARING 6201LLB | 1 | PC. |
| 035 | | | 213102-5 | DUST SEAL 12 | 1 | PC. |
| 036 | | | 163113-9 | SPINDLE LOCK | 1 | PC. |
| 037 | | | 931402-8 | HEX. NUT M8 | 1 | PC. |
| 038 | | | 911106-8 | PAN HEAD SCREW M4X8 | 1 | PC. |
| 039 | | | 341415-5 | LOCK PLATE | 1 | PC. |
| 040 | | | 341416-3 | LEVER PLATE | 1 | PC. |
| 041 | | | 941201-0 | FLAT WASHER 8 | 1 | PC. |
| 042 | | | 212052-1 | NEEDLE BEARING 1010 | 1 | PC. |
| 044 | | | 226532-1 | HELICAL GEAR 39 | 1 | PC. |
| 045 | | | 257064-7 | RING 15 | 1 | PC. |
| 046 | | | 316700-5 | BEARING BOX | 1 | PC. |
| 047 | | | 911126-2 | PAN HEAD SCREW M4X16 | 4 | PC. |
| 048 | | | 317436-9 | SAFETY COVER | 1 | PC. |
| 049 | | | 341417-1 | LEVER | 1 | PC. |
| 050 | | | 266026-4 | TAPPING SCREW BIND CT 4X12 | 1 | PC. |
| 051 | | | 251858-2 | SCREW M6X15 | 1 | PC. |
| 052 | | | 265075-8 | + PAN HEAD SCREW M5 | 1 | PC. |

| Item No | Type | Ref | Part No | Description | Qty | Unit |
|---------|------|-----|----------|--|-----|------|
| 053 | | | 251920-3 | CAP SQUARE NECK BOLT M6X30 | 1 | PC. |
| 054 | 2 | | 267238-2 | FLAT WASHER 12 | 1 | PC. |
| 055 | | | 912212-2 | COUNTERSUNK HEAD SCREW M5X12 | 4 | PC. |
| 056 | | | 266249-4 | CAP SQUARE NECK BOLT M8X24 | 1 | PC. |
| 057 | | | 163378-3 | BASE | 1 | PC. |
| 058 | | | 163248-6 | ANGULAR PLATE | 1 | PC. |
| 059 | | | 941151-9 | FLAT WASHER 6 | 1 | PC. |
| 060 | 4 | | 253428-3 | SPRING WASHER 6 | 1 | PC. |
| 061 | | | 252624-0 | WING NUT M6 | 1 | PC. |
| 062 | | | 266213-5 | H.S.SET SCREW(FLAT POINT)M5X12 | 1 | PC. |
| 063 | | | 962153-2 | RETAINING RING R-35 | 1 | PC. |
| 064 | | | 252103-8 | HEX. LOCK NUT M5-8 | 1 | PC. |
| 065 | | | 417711-4 | BUFFLE PLATE | 1 | PC. |
| 067 | 2 | | 631709-9 | * LIGHT CIRCUIT | 1 | PC. |
| 068 | | | 651514-8 | * SWITCH SLE6A (Removed after Feb 2014 production) | 1 | PC. |
| 069 | | | 654531-7 | TERMINAL BLOCK 2P | 1 | PC. |
| 072 | | | 961055-9 | RETAINING RING S-15 | 1 | PC. |
| 100 | 1 | | 654001-6 | * TERMINAL R1.25-3.5 | 4 | PC. |
| | 2 | | 654037-5 | * TERMINAL R1.25-3.5 | 4 | PC. |
| 101 | | | 654069-2 | * RECEPTACLE (Removed after Feb 2014 production) | 1 | PC. |
| 102 | | | 652008-6 | PAN HEAD SCREW M3.5X7 | 4 | PC. |
| C01 | | | 872354-3 | CARTON F/5007FK | 1 | PC. |
| C01 | | | 876430-5 | CARTON F/5007F | 1 | PC. |
| E01 | | | 810133-1 | CAUTION LABEL | 1 | PC. |

ACCESSORIES

- See catalogue or visit www.makita.ca for more accessories information -

| | | | | | | |
|-----|--|------|------------|-------------------------------------|---|-----|
| A01 | | | 164095-8 | GUIDE RULE (5007FK) | 1 | PC. |
| A02 | | | D-35352-10 | 7-1/4" CT SAW BLADE 24T 5/8", 10/PK | 1 | PC. |
| | | | A-94530-10 | 7-1/4" FRAMING BLADE, 24T, 10PC/PK | 1 | PC. |
| A03 | | | 782016-4 | OFFSET WRENCH 13 | 1 | PC. |
| A04 | | | 824473-1 | PLASTIC CARRYING CASE (5007FK) | 1 | PC. |
| | | INC. | 417059-4 | LATCH | 2 | PC. |
| | | INC. | 418889-6 | HANDLE | 1 | PC. |
| A05 | | | 199711-3 | DUST NOZZLE SET | 1 | PC. |
| | | INC. | 272243-5 | LEVER 36 | 1 | PC. |
| | | INC. | 911223-4 | PH SCREW M5X16 W/WR | 1 | PC. |

SERVICE CHANGES

1. Changes on Tension Spring 4

| Item No. | Description | Type 1 | Type2 |
|----------|------------------|----------|----------|
| 026 | Tension spring 4 | 231828-7 | 231888-9 |

(TI#A3885)

Type 1



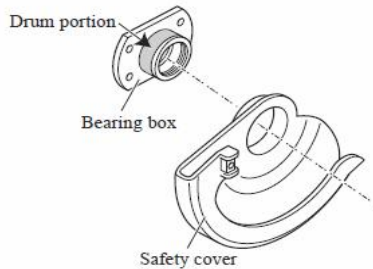
Spring pulling force: 4.0N

Type 2



Spring pulling force: 4.9N

Note: When replacing Tension spring 4, apply 0.05ml of Lubricant VG46 on Drum portion of Bearing box where Safety cover pivots as illustrated below.



2. Changes on Motor Housing etc.

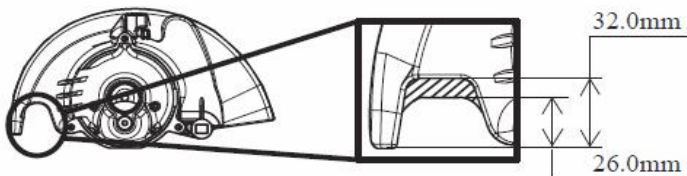
(TI#A2015)

| Item No. | Description | Type 1 | Type2 | Fig no. |
|----------|------------------------|----------|----------|---------|
| 033 | BLADE CASE COMPLETE | 153436-3 | 142465-1 | 1), 2) |
| 012 | MOTOR HOUSING COMPLETE | 152989-9 | 142466-9 | 3) |
| 019 | HANDLE COVER | 417712-2 | 454973-3 | 4) |
| 066 | FRAME | 417468-7 | | |
| 005 | FIELD ASS'Y 115V | 590010-0 | 596396-0 | |
| 067 | LIGHT CIRCUIT | 631453-8 | 631709-9 | |
| 068 | SWITCH SLE6A | 651514-8 | | |
| 101 | RECEPTACLE | 654069-2 | | |
| 015 | CORD GUARD 10-90 | 682505-8 | 682574-9 | |
| 100 | TERMINAL R1.25-3.5 | 654001-6 | 654037-5 | 5) |

Interchangeable as a set

Fig. 1)

Change of Blade case complete

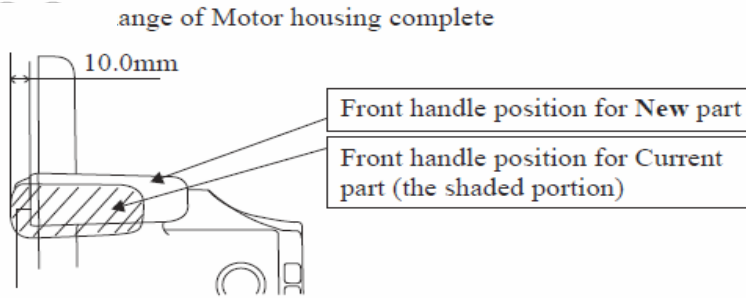


Height of opening to see blade tip has been reduced from 32.0mm to 26.0mm.

Fig. 2 Change of Indication label

| | Current | New |
|------------------|---------|-----|
| Design | | |
| Pasting position | | |

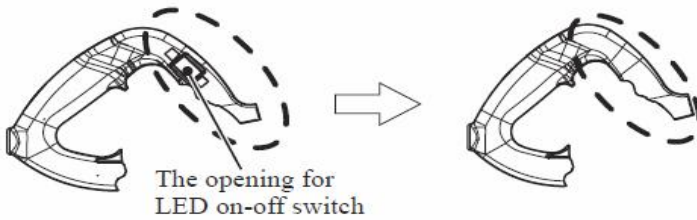
Fig. 3)



Front handle of Motor housing complete has been repositioned 10.0mm apart from the blade.

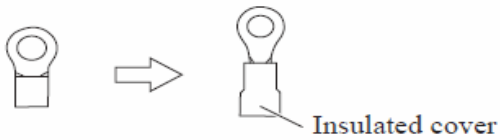
Fig. 4)

Change of Handle cover (for 5007F, 5007FA)



The opening for LED on-off switch on Handle cover has been eliminated. The shape of Handle cover has been also changed due to the change of Motor housing complete.

Fig. 5) Change of Terminal



Wiring Diagram : See TI#A2015